

Norwegian hat

by Maren Lie Malmo

This pattern is mostly about the design chart, as it can be used on any hat, regardless of size, needle & yarn – you just adjust the number of stitches to correspond with the design (20)



Example hat size, adult:

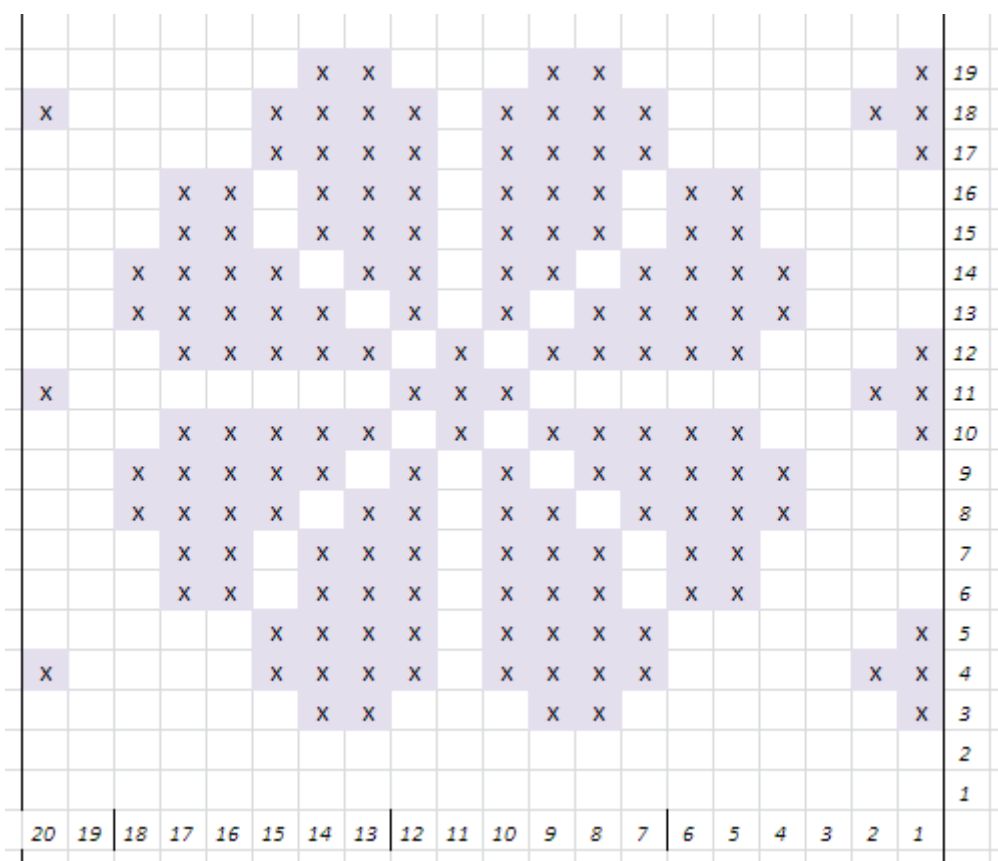
Needle: 3.5mm / US 4

Yarn: Any yarn that suits the needle size

Cast on 139 stitches and make a neat border. I usually do knit 1, purl 1.

139 stitches doesn't correspond with the design being 20 stitches long, so increase 1 stitch when you're happy with the border length.

After the border, knit 1-2 rounds, the design begins on row 3. The pattern reads from right to left, the same way we knit. 😊



When the hat is your desired length, cast off like this:

Knit 4 stitches, knit 2 together.

Knit 4 rows.

Knit 3 stitches, knit 2 together.

Knit 4 rows.

Knit 2 stitches, knit 2 together.

Knit 4 rows.

Knit 1 stitch, knit 2 together.

Knit 3 rows.

Knit 2 together throughout the row.

Knit 2 rows.

Knit 2 together throughout the row.

Pull yarn through remaining stitches and secure thread.

There you go! ☺